

ARC Hunter

Towed Side Scan Sonar

Marine Sonic Technology



Sea Scan® ARC Hunter

150kHz – 1800kHz | Ultra-long Range | 300m Towed Depth

The ARC Hunter Product Line of Heavy-Duty Towed Systems is designed to address the demanding requirements of deep-water survey operations. Hunter's low frequency Adaptive CHIRP Technology enables industry leading range performance, while maintaining Marine Sonic's high-resolution image quality. The adaptive CHIRP technology provides the highest imaging quality possible from a side scan sonar and supports ranges up to 60% greater than non-CHIRP systems. Developed around this technology, Hunter Towed Systems achieve ranges beyond 500 meters per side and reaching at least 1000m in swath under real-world conditions.



The heavy and highly-stable Hunter tow body supports various towing configurations and is available in a rugged stainless-steel, or aluminum configuration. Every Hunter System includes a portable watertight topside processor, ruggedized laptop and a 30m to 500m tow cable. Customer-specific lightweight Kevlar or armored tow cables as well as heavy and light duty winch options provide additional flexibility for different applications and simplified cable management on variable sized platforms. Should your mission require specialized sonar equipment, Marine Sonic offers customized tow body & sonar designs, platform integration services and operator training.

Hunter Towed Systems come standard with a single 150kHz or dual 300kHz / 900kHz frequency module. High Frequency Modules up to 1800kHz can be added. The extensive range of the low frequency in conjunction with the ultra-high resolution of the high frequency module transform Hunter into the ideal all-rounder for target location and identification using the same sonar equipment. Like all Marine Sonic Technology products, the ARC Hunter comes with the user-friendly and self-explanatory Sea Scan Survey acquisition and review software.

Applications

- Salvage, Treasure, & Diving Surveys
- Archaeological & Biological Surveys
- Terrain Mapping & Obstruction Surveys
- Search & Recovery
- Civil Infrastructure Inspection
- Offshore Infrastructure Inspection

Key Features

- Single & Dual Frequency Configurations
- Altimeter / Depth Sensor
- Stainless Steel or Aluminum, Construction
- Various Hydraulic & Electric Winch Options
- 30m - 500m Tow Cable Options
- Lightweight Kevlar & Armored Tow Cable Options



MARINE SONIC TECHNOLOGY
A BRAND OF ATLAS NORTH AMERICA

Sea Scan[®] ARC Hunter

Full Flexibility | Low Lifecycle Costs | Great Customer Service

Towfish Specifications

Construction	Aluminum or Stainless
Dimensions	Diameter: 11.4 cm / 4.5" Length: 203.2 cm / 80 in
Weight*	Aluminum: 54.5 kg / 120lbs Stainless: 99.8 kg / 220 lbs
Depth Rating	300 m / 984 ft

* Weights are adjustable based on desired operations

Tow Cable Specifications

Construction	Twisted Pair with Kevlar Strength Member
Length Options	30 m to 500 m / 98 ft to 1640 ft
Bend Radius	10 cm / 4 in

Topside Communications Unit Specifications

Construction	IP68 Watertight Enclosure
Dimensions	24 cm x 16.5 cm x 9 cm / 9.5 in x 6.5 in x 3.5 in
Connections	Ethernet / Towfish / Power
Power	12V - 30V DC, 100V - 200V AC with Adapter

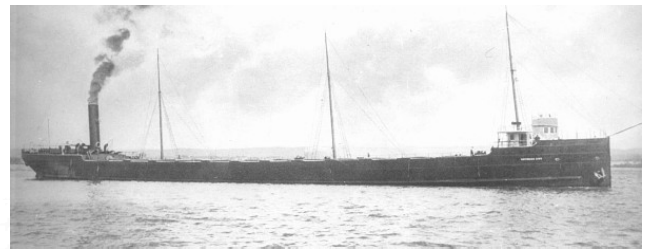
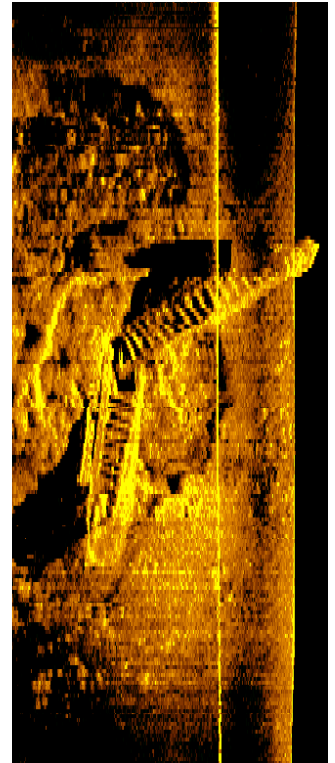
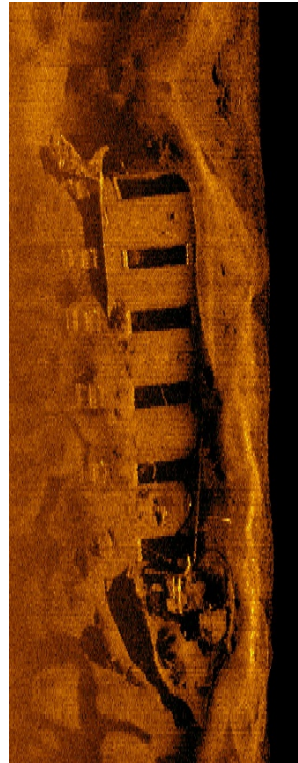
Acoustic Specifications

Across Track Resolution	0.4 cm to 1.5 cm
Horizontal Beam Angle	0.4° (one-way), < 0.3° (two-way)
Vertical Beam Angle	24° (two-way)
Transmit Pulse Technology	Marine Sonic Technology Adaptive™ CHIRP
Transmit Pulse Bandwidth	35 to 200 kHz
Transmit Pulse Length	< 0.5 ms
Data Collection Speed	5.3 Knots Max.

Frequency Specifications

Frequency	Max Range (per side)	Along Track Resolution
150 kHz	500 m / 1640 ft	60.8 cm
300 kHz	250 m / 820 ft	30.4 cm
600 kHz	140 m / 460 ft	15.2 cm
900 kHz	80 m / 262 ft	10.0 cm
1200 kHz	45 m / 148 ft	7.5 cm
1800 kHz	25 m / 82 ft	5.0 cm

The image below is of the SS Superior City at a range of 30m (left) using the 900kHz module, and a range of 137m (right) taken with the Arc Hunter 150kHz module. The SS Superior City sank in 1920 and rest upright in 82m (270 ft) of water in Whitefish Bay Lake Superior.



We Pride ourselves on our Customer Support.

- Free 24hr Tech Support
- Free Factory Training
- Free Software Upgrades
- 3-year limited warranty

ATLAS NORTH AMERICA LLC
120 Newsome Drive, Suite H
P.O. Box 1309
Yorktown, VA 23629 | United States

Phone: +1.757.463.0670
Telefax: +1.757.463.0673
info@na-atlas.com
www.marinesonic.com

Follow us online:
www.linkedin.com/company/marine-sonic-technology/
www.facebook.com/marinesonic



MARINE SONIC TECHNOLOGY
A BRAND OF ATLAS NORTH AMERICA

ATLAS NORTH AMERICA
A company of the ATLAS ELEKTRONIK Group