

DEEP TREKKER ACCESSORIES

The Deep Trekker DTG2 ROV can be fitted with a comprehensive range of accessories which further enhance the spectacular performance of this innovative ROV.

Auxiliary Lighting:

Investigating the darkest waters? Deep Trekker now offers external LED lighting in addition to the internal LED flood light that tracks with the camera. Mounted ahead of each thruster, the 900 lumen lights brighten the dark waters to see the utmost detail in your projects. These dimmable auxiliary lights are controlled independently of the main LED flood light from the hand-held controller.

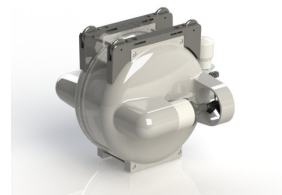


Quick Specs:

- Lumens: 900 luminous flux (lm)
- Colour Rating: 5000 K
- On/off and dimmable, independent of main internal flood light

Crawler Wheels:

Manoeuvring within tight space or along sediment is now made easier with the Deep Trekker Crawler Wheels. Ideal for tracking across the hull of a boat or pipe, the Crawler Wheels can be attached to the DTG2 ROV on the top, bottom or both based on your preference. The accessory is a great tool to have available for when a specific job arises, the crawler wheels can be attached or removed at any time in field.



GoPro Mount:

Love your GoPro? You can easily mount it to your DTG2 ROV to instantly record video or take pictures as you explore the underwater world. Please be mindful of the depth restrictions of your GoPro, as the Deep Trekker ROV is depth rated to much more than the standard GoPro.

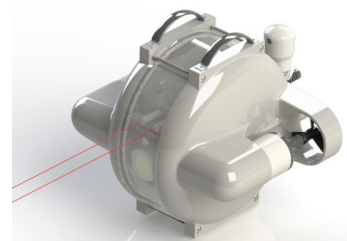
(this is a mount for the Deep Trekker DTG2 ROV a GoPro camera is not included)



Laser Scaler:

When understanding the size of objects or specimens is critical to your task, the Laser Scaler is an ideal tool. Perfect for the aquaculture industry to track fish sizes, the Laser Scaler sends our two laser beams 25 mm apart from above the camera. This allows the user to scale objects within the camera view up to 2 meters away.

The lasers are mounted to the camera within the ROV and the dots are centred on the screen. This unique setup allows the laser to scale object in the full field of view of the camera which is mounted on a 270 degree tilting arm. Measuring an object directly below or above the ROV is not a problem.



Thickness Gauge:

The DTG-2 now offers an integrated Cygnus Multiple Echo Ultrasonic Digital Thickness Gauge. This industry leading system has been specifically designed to integrate seamlessly with the DTG2 ROV, making it easier to determine the metal thickness of a tanks, hulls, or corrosion without removing protective coatings.



TriTech Micron SONAR:

In addition to the high definition camera on the DTG2 ROV, Deep Trekker has integrated sonar technology using the Trittech Micron Sonar. This innovation in design brings new capabilities to the ROV by providing obstacle avoidance and target recognition.

The Trittech Micron Sonar is the smallest digital Compressed high intensity radio pulse (CHIRP) being produced in the world. CHIRP technology dramatically improves the range resolution compared to conventional sonars. The Trittech Micron is extremely compact, simple to operate and cost effective. Deep Trekker ROVs are the most portable system, allowing for the sonar technology to be added to any of the Deep Trekker products.



Sediment Sampler:

Do more with the DTG2 Worker model by transforming the grabber arm to also collect samples. This add-on to the grabber arm is excellent for environmental or research settings where samples of shorelines or marine vegetation are required. The sediment sampler can be quickly be mounted to the grabber arms and taken off depending on your mission.

(must have optional grabber arm or DTG2 Worker model for sediment sampler)



MicronNav USBL Position System:

The TriTech MicronNav USBL Position System to intuitively track and position your Deep Trekker ROV when it is underwater. Understanding where the Deep Trekker Remotely Operated Vehicle is when it disappears below the water



Digital Video Glasses:

This digital eyewear, with a virtual screen displays crystal clear images from the boat, dock, or rig. The best way to view the underwater video from your Deep Trekker ROV, the eyewear connects to all NTSC or PAL audio/video devices with video-out capabilities and composite video connections.



Hand Held Digital Video Recorder:

Record all of your undersea work using our handheld digital video recorder. Watch right on the high definition screen as everything that Deep Trekker sees is recorded at high resolution right onto an SD media card.

